



Make a lasting impression.



The **MQ Mikasa MRH-Series** walk behind tandem rollers are designed to meet contractor expectations for dependability and ease of use. These versatile rollers are compact and powerful enough to handle the toughest asphalt and soil applications.



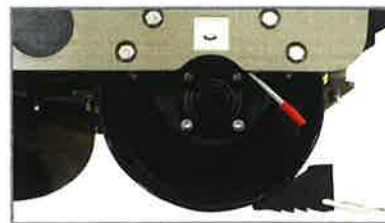
- **Engine options** - Honda gasoline or Kubota diesel liquid cooled engines.
- **Hydraulic drive system** - provides smooth machine operation.
- **Automatic shut-off button** - located at the top of the handle keeps the operator safe when actuated.
- **Hourmeter** - measures runtime (MRH601DS only)
- **Electromagnetic clutch** - for fast and smooth engagement of vibrator function.
- **Plastic Water tank** - eliminates rust.
- **Fold-up guide handle** - for easy transport and storage.
- **Narrow profile** - for less than one-inch wall clearance.

| Specifications: | MRH601DS | MRH800GS |
|-----------------------------------|---------------------|----------------|
| Weight lbs (kg) | 1,248 (566) | 1,530 (694) |
| Height in (mm) | 47 (1,195) | 46.1 (1,171) |
| Width in (mm) | 27.2 (692) | 27.2 (692) |
| Length in (mm) | 89.2 (2,265) | 105.1 (2,670) |
| Drum Diameter in (mm) | 14 (355) | 16 (406) |
| Drum Width in (mm) | 25.6 (650) | 25.6 (650) |
| Vibrating Frequency vpm | 3,300 | 3,300 |
| Centrifugal Force lbs (kn) | 2,428 (10.8) | 5,283 (23.5) |
| Traveling Speed mph (kph) | 0-1.86 (0-3) | 0-1.86 (0-3) |
| Gradeability | 35% | 35% |
| Water tank gal (l) | 7.9 (30) | 10.6 (40) |
| Engine | Kubota EA-330-E3 | Honda GX390 |
| Fuel | Diesel | Gas |
| HP rating (kw) | 6.2 (4.6) | 11 (8.2) |

* Battery not included.



Horn and headlight switch for job-site safety



Parking brake and stoppers for job-site placement stability

Warranty: 1 year basic machine parts and labor.

Your Multiquip dealer is:

Connect with us on



All features and specifications are subject to change without notice.
REV:0115

RX1575



Transforming articulation.



MQ's articulating trench roller is now more reliable than ever. The Rammax RX1575 is designed to meet contractor expectations for performance and durability. Loaded with all the features you need, the RX1575 articulates confidence.

1 Flexible drum options include easy to remove drum rings that adjust from 33" to 24" working widths or 33" solid drums.

2 Compaction performance and increased stability on uneven surfaces with a maintenance free oscillating articulation joint.

3 Gain traction on tough material with steel padded drums and four scrapers.

4 Increased control in all terrain conditions with a wireless remote transmitter covering a wider operational area & two ideally positioned receiver eyes.

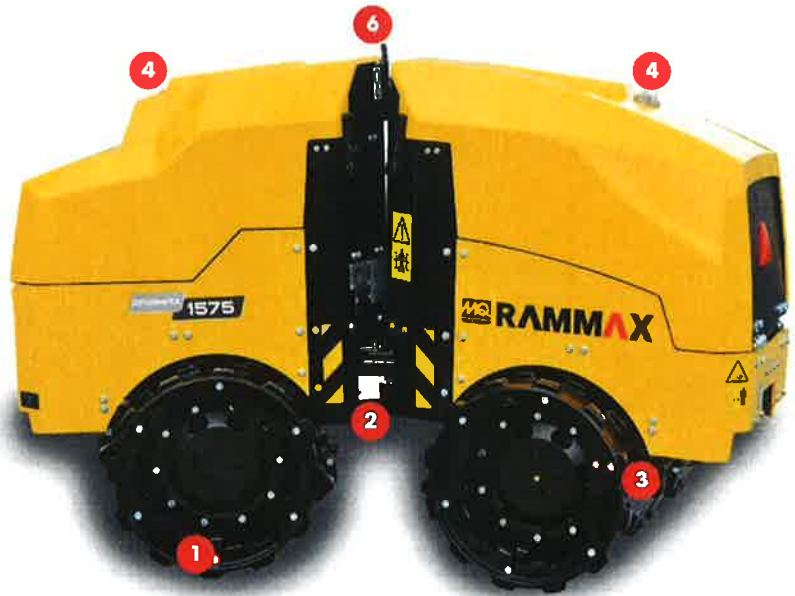
5 Charge the remote control battery with a solar panel or cable connector.

6 Total safety concept reduces job site hazards. Visual contact is required between remote transmitter and receiver eyes. Roller automatically stops within 8 ft. (2.5m) of the operator.

7 Powerful Yanmar diesel engine liquid cooled, 3 cylinder engine is EPA Tier 4 compliant. Delivers exceptional performance even in high altitude applications.

8 Able to withstand rugged work environments and steer quickly and precisely with two steering cylinders.

9 Easy access to all maintenance points with fold-up front and rear covers.





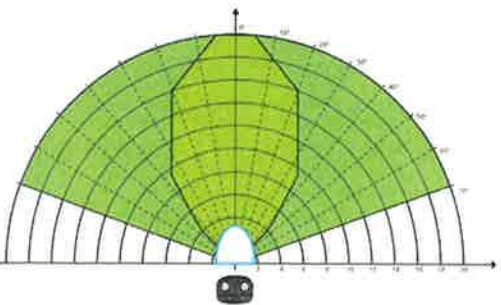
Unique oscillating articulation joint provides optimum traction and compaction on uneven surfaces. It also improves operational stability and reduces tip over risk.



A highly fuel efficient Yanmar engine idles automatically after 15 seconds of no load. Operating run-time can reach up to 11.5 hours with a 7.4 gallons diesel reservoir consuming only 0.74 gal/hr. Electronically adjusts fuel delivery to maintain optimum performance, even at high altitudes.



Infrared (IR) control system optimized for both operator safety and functionality. Requires visual contact with the machine for operation. Simplify fleet management by pairing transmitter to roller in seconds via cable connector. Blocks out signals from other machines on the job.



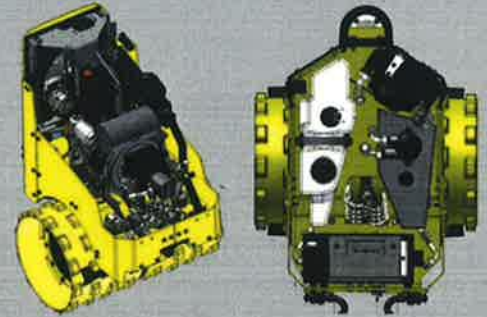
Ideally positioned IR receivers provide a wide operating range up to 66 feet at a 70 degree angle eliminating virtually any dead spot.

Service Friendly



Hydraulic Hose Network

Easily accessed through the drums with no special tools required. All hoses are routed to prevent wear and numbered for easy identification.



Frame Layout

Convenient access to both compartments places battery, filters, oil fills, fluid drains and hydraulic hoses within reach reducing time spent on scheduled maintenance.



Exciter Design

In maintenance free exciter shafts with oversized bearings and single cast construction to maximize service life.



SPECIFICATIONS RX1575 SERIES

| Performance Data | RX1575 | RX157533 |
|--|--------------------------------------|---------------|
| Centrifugal Force-lbs (kn) | 16,860 (75) HIGH 8,430 (37.5) LOW | |
| Vibration Frequency - vpm (hz) | 2,460 (41) | |
| Amplitude - in (mm) | 0.043 (1.1) HIGH 0.024 (0.6) LOW | |
| Travel Speeds - ft/min (m/min) | 148 (45) HIGH 82 (25) LOW | |
| Max Grade w/w-out vibration | 40/50 | |
| Inside Turning Radius - in (mm) | 61 (1,541) | 57 (1,436) |
| Outside Turning Radius - in (mm) | 86 (2,191) | 90 (2,286) |
| Engine | | |
| Engine Make/Model | Yanmar 3TNV76 | |
| Engine Power-hp (kw) | 20.4 (15) | |
| Operating Speed - rpm | 2,400 | |
| Diesel Fuel Tank Capacity - gal (l) | 7.4 (28) | |
| Hydraulic Oil Tank-gal (l) | 4.2 (16) | |
| Weights and Dimensions | | |
| Overall Width - in (mm) | 24 (610) | 33 (850) |
| Overall Length - in (mm) | 78 (1,980) | |
| Overall Height - in (mm) | 52 (1,317) | |
| Operating Weight - lbs (kg) | 3,087 (1,400) | 3,197 (1,450) |
| Features | | |
| Wireless Remote | Infrared | |
| Range of Infrared Operation - ft (m) | 65 (20) MAX 8 (2.5) MIN | |
| Range of Cable Connected Operation - ft (m) | 13 (4) MAX 8 (2.5) MIN | |
| Remote Control Charging | Solar & Electric | |
| Cable Connector | Standard | |
| Shutdown Safety Bar | Optional | |
| Removable Drum Rings | Optional | NA |



CONFIDENCE

5 Years - Bearings, Drive Motor and Eccentric Housing Assemblies
3 Years - Yanmar Engine
2 Years - Basic Machine Parts & Labor

Your MultiQuip dealer is:





Patch and Go.



Keep things smooth with Multiquip's "one-person patch crew"- the V305EH walk behind roller. Designed to meet operator expectations for easy steering and transport, the V305 is the ideal option for small repair and maintenance jobs.



- 1 **Reliable Honda GX340** engine for easy starting and quiet operation.
- 2 **Maintenance free** vibratory assembly requires no greasing to reduce service time.
- 3 **Elongated handle** provides leverage for increased maneuverability and three height adjustments enhance operator comfort.
- 4 **Three water flow adjustment** settings allow for even water distribution to the drum.
- 5 **Hour/Tachometer** simplifies service and tracks maintenance intervals.
- 6 **Swing away hood** requires no tools to access internal components.
- 7 **Adjustable transport hooks** are easily changed to meet truck height requirements.
- 8 **Central lifting eye** for balanced lifting.
- 9 **Stabilizing rollers** help maintain operator balance.
- 10 **29" wide steel drum** with beveled edges helps prevent asphalt marring.
- 11 **Hydrostatic drive system** offers variable speed control, smooth acceleration and braking.

| Specifications | V305EH |
|---------------------------------------|------------------|
| Operating Weight w/o Water - lbs (kg) | 1,168 (530) |
| Overall Length - in (mm) | 88.5 (2,248) |
| Overall Width - in (mm) | 35 (890) |
| Overall Height - in (mm) | 86.5 (2,197) |
| Drum Width - in (mm) | 29 (737) |
| Drum Diameter - in (mm) | 22 (559) |
| Curb Clearance Right - in (mm) | 16.5 (419) |
| Curb Clearance Left - in (mm) | 4.5 (114) |
| Wall Clearance Right - in (mm) | 0.75 (19) |
| Wall Clearance Left - in (mm) | 4.5 (114) |
| Centrifugal Force - lbf (kn) | 3,800 (16.9) |
| Frequency - vpm (Hz) | 4,200 (70) |
| Travel Speed Forward - mph (kmh) | 2.5 (4) |
| Travel Speed Reverse - mph (kmh) | 1.7 (2.7) |
| Gradeability Maximum - (%) | 10 |
| Engine | |
| Engine Manufacturer | Honda GX340 |
| Operating Speed - (rpm) | 3,100 |
| Horse Power Rating - hp (kw) | 10.7 (8) |
| Fuel Tank Capacity - gal (l) | 1.6 (6.1) |
| Water System | |
| Water Tank Capacity - gal (l) | 7 (26.5) |
| Water Tank | Plastic |
| Water Release Control | On Handle |
| Water Flow | 3 Detents |
| Service Features | |
| Vibratory Assembly | Maintenance Free |
| Electronic Display | Hour/Tachometer |



Spring loaded scraper bar folds up for easy change out and cleanup.



Patent pending plastic water tank eliminates water flow obstructions from rust build-up.



Multi-functional handle controls forward and reverse travel, water flow to the drum, vibration and the emergency stop feature.

Your Multiquip dealer is:



WARRANTY:
 V305 Vibratory roller- 1 year parts and labor.
 Contact Multiquip for complete warranty information.
 Honda GX340- 3 years. Please consult with Honda for warranty details and updates.

